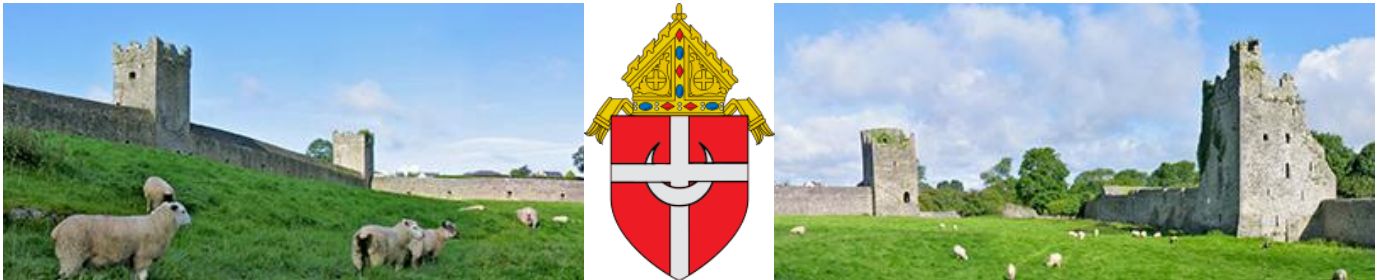




Presents:



**Archdiocese of Denver
Official Pilgrimage
To the
50th International Eucharistic Congress in
Dublin, Ireland
June 9 - 18, 2012**

With
**The Most Rev.
James D. Conley**
Auxiliary Bishop of Denver





ARCHDIOCESE OF DENVER

OFFICE OF THE AUXILIARY BISHOP

August 1, 2011

Dear Brothers and Sisters in Christ,

The 50th Anniversary of the Second Vatican Council (1962-1965) is a historic moment for the universal Church and the local Church in Northern Colorado. Blessed Pope John Paul II called Vatican II “The greatest religious event of the Twentieth Century.” It is fitting that we should commemorate this important anniversary by saying “yes” to Pope Benedict XVI’s invitation to the **50th International Eucharistic Congress in Dublin, Ireland**.

Pilgrimages have always held a privileged place in the history of the Catholic Church. This more noble kind of travel has been a source of grace and renewal in the life of Christians for centuries. With this in mind, the Archdiocese of Denver has organized an official Ireland pilgrimage. I am honored and privileged to lead this pilgrimage along with a pastoral team on **June 9-18, 2012**.

I invite every parish to consider forming a parish delegation to join with others in the Archdiocese of Denver to participate in this gathering of the universal Church in Dublin. The International Eucharistic Congress is a wonderful opportunity to reflect on Vatican II’s teaching that the Eucharist is the “source and summit” of our faith because it is our encounter with the risen Christ himself (*Sacrosanctum Concilium*).

Our official pilgrimage provider, **Faith Journeys**, has been in close collaboration with the International Eucharistic Congress (IEC) staff in Dublin. Those who are able to participate in the IEC will find the pilgrimage to be a time of encouragement and renewal as we all strive to deepen our love for the Eucharistic Lord.

Please prayerfully consider this invitation and I look forward to accompanying you on this pilgrimage of faith.

Sincerely yours in Christ,

Most Reverend James D. Conley, S.T.L.
Auxiliary Bishop of Denver

Ireland



50th International Eucharistic Congress: The Eucharist: Communion with Christ and With One Another!

June 9-18, 2012 (10 days / 8 nights)

Day 1 – June 9, 2012 – Departure from the USA

The Eucharist is bread for the life of the world. –John 6:51

Our pilgrimage with +Bishop Conley begins with an overnight flight to Dublin.

Day 2 – June 10, 2012 – Fáilte – Welcome to Ireland!

The Church was born of the paschal mystery. For this very reason the Eucharist, which is in an outstanding way the sacrament of the paschal mystery, stands at the centre of the Church's life. (Lumen Gentium #7)

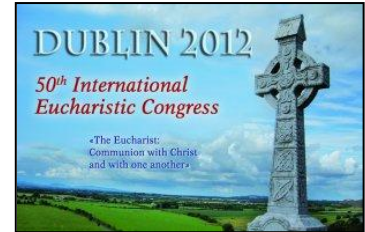
Arriving at Dublin Airport, we meet our coach driver and guide and transfer to the city centre.

With hearts open to the Eucharist, we enjoy a panoramic tour of Dublin City, discovering the north side of the River Liffey. This area offers great striking monuments such as the GPO (General Post Office) on the city main thoroughfare, O'Connell Street, or the Custom House along the quays, as well as the Phoenix Park, the largest public park in Europe.

The south side appears more sophisticated with its vast Georgian squares, such as Merrion Square, where Oscar Wilde's House can still be found (today owned by an American College), its colorful doors, along with Grafton Street and its quality shops. Not so far from St. Stephen's Green, in Kildare St., you will see the house of Bram Stoker, the author of Dracula. This part of the city is also dominated by the students of Trinity College, where the famous book of Kells is permanently exhibited in its library. The university is facing the medieval district where Dublin Castle and the two Anglican Cathedrals can be found.

We visit historic Trinity College. Trinity was founded in 1592 by Queen Elizabeth 1st on grounds confiscated from an Augustinian priory and is the oldest University in Ireland. The Campanile, erected in 1852, was built on what is believed to be the centre of the monastery. Built to further the education of the ruling Anglo-Irish families, restrictions were imposed to prevent Catholics from attending courses. These restrictions were not fully lifted until the 1970's. Trinity however admitted women in 1902, earlier than most British universities. Most of the main buildings off the main square were built during the Georgian period, some of which replaced older buildings. Within its walls, you will be able to admire Parliament Square and its 18th Century edifices. Trinity College has had many famous students such as Jonathan Swift and Samuel Beckett who later became a lecturer in French at the university. The Inter-denominational Church is very much worth a visit, should it be open during our visit.

Next we explore St. Patrick's Cathedral. St Patrick's is the National Cathedral of Ireland and is built on the site where St Patrick preached. There was a small church on the site which was still in existence when the Anglo-Normans arrived. This church was replaced with a stone church in 1191 and it was further remodeled in 1225 to the same design as Salisbury Cathedral. Ireland's first



university was founded at St. Patrick's in 1320 and intermittently operated for 200 years. St Patrick's is Gothic in style and its splendid interior is adorned with funeral monuments, such as The Boyle Family Memorial and the grave of Dean Jonathan Swift. Swift was dean here until his death in 1745. The Chancel has ornate stained-glass windows, and spectacular choir stalls, once used by the knights of St Patrick adjoin the Altar. The massive west towers, houses a large peal of bells whose ringing tones are so much part of the character of Dublin. We transfer to our hotel and check in and enjoy dinner and overnight.

Reflect: How will these many new sights and meeting brothers & sisters from around the world strengthen my faith in Christ and the Church?

Day 3 – June 11, 2012 – Wicklow

The Eucharistic Congress logo reminds us of people “from every nation, race, tribe, and language (Rev. 7:9) being drawn together in Communion as ‘One Body’ formed by faith in the person of Jesus Christ, the Lamb of God, and the sacrifice he made upon the cross. (www.iec2012.ie Congress Logo)

In the morning after a full Irish breakfast we journey southwards into County Wicklow. County Wicklow, also known as the Garden of Ireland, is home to Powerscourt, Mount Usher and Russborough, to name a few of its many houses and gardens. This region features all the various types of scenery that makes Ireland so beautiful. The coastline is bordered by charming sea resorts such as Bray or Greystones. In the heart of its gentle and rounded hills are nestled Enniskerry and Avoca, both very picturesque villages. Discover its romantic and quiet beauty, the deserted mounts where nothing but heather grows, the small forests and the lush prairies illuminated by yellow gorse in spring.

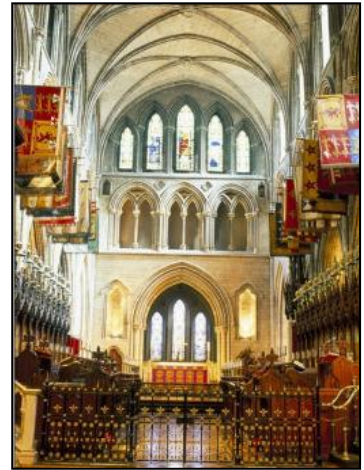
Next we visit Glendalough. The English name Glendalough originated from the Irish “Gleann Dá Locha”, which translates as “The valley of the two lakes.” It was here that St. Kevin, son of the king of Leinster founded a monastery in the 6th century. From a simple beginning the site grew to become famous as a centre of learning throughout Europe. Standing for 600 years it was destroyed in 1398. Much of what is to be seen today dates from the 10 to 12th century. One of the most attractive features is the fine 34m high round tower. A cathedral, stone churches and decorated crosses also survived albeit as ruins. Glendalough has an excellent visitor's centre and display area, which is located at the entrance to the Valley. It houses a very comprehensive exhibition on Glendalough detailing the history, archaeology and wildlife of this area of Wicklow. We continue to Waterford for dinner and overnight.

Reflect: Though weary from travel, my mind and spirit are energized by what lies ahead. Lord, make me a channel of your peace. (Prayer of St. Francis)

Day 4 – June 12, 2012 – Waterford to Kerry

The faithful departed are not just people who have died and for whom we might grieve “like the pagans do” (1 Thess.4:13). They are people who, because they were nourished by the Eucharist, will live forever (Jn.6).

This morning after a full Irish breakfast we visit the new Waterford Crystal Visitor Centre. This brand new home for Waterford Crystal occupies a 1.5 acre site on the Mall in the heart of Waterford – a prime location set back just a



hundred yards or so from the River Suir and the city's main quay, and bordering the city's Viking Triangle area. The new manufacturing facility includes highly skilled local craftsmen and produces 40,000 crystal pieces per year using traditional methods. The House of Waterford range that is produced includes trophies for prestigious sporting events, bowls and vases from the museum, heritage and designer collections, and also the special order stemware collection. The factory tour includes the following traditional production areas; Wooden mould making, Crystal Blowing and Furnace, Quality Inspection & Finishing, Crystal Cutting, Crystal Sculpting & Engraving, Chandelier Assembly and Design Inspiration.



We depart Waterford and travel on to Mount Melleray. The Abbey was founded in 1832 by a group of Irish monks who had been expelled from a monastery near Melleray in Brittany, France. They were given a tract of mountain land by Sir Richard Keane near Cappoquin on which they founded Mount Melleray. It is a fully functioning monastery and is open for visitors who seek peace and solitude.



We continue for a visit to Ardmore. Árd Mór: Great Height. It was to this part of the Waterford coast that St Declan was miraculously guided, on a return voyage from Wales some time during the 5th century. Today, a number of sites remain from his monastic city, pointing to a devotion that stood the test of time. Several monuments pertaining to Declan are to be found at Ardmore, within and without the medieval monastic city. Also, there are buildings from after his time, from the monastery, which grew up in his memory. We enjoy the scenery as we travel on to County Kerry for dinner and overnight.



Reflect: How is my faith strengthened by the Communion of the Saints? Who needs my intercession back home?

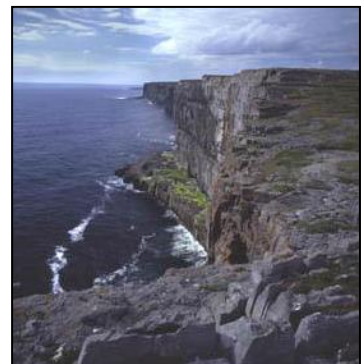
Day 5 - June 13, 2012 – Cliffs of Moher & Burren

The Eucharist is the memorial of Christ's death AND resurrection. As such, it does not just look back to a historical event, but also looks forward to the ultimate end of our humanity. (www.iec2012.ie Congress Themes)

This morning after a full Irish breakfast we journey northwards to Tarbert and take the car ferry to Killimer into County Clare.

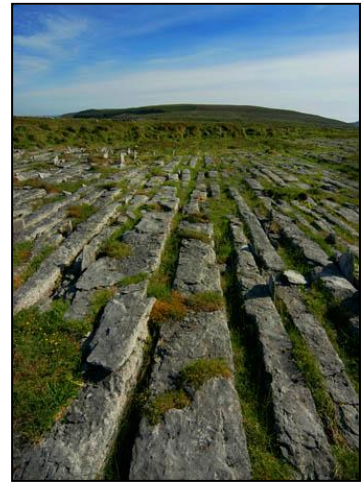


We explore the coast to the Cliffs of Moher. Situated on the Atlantic Ocean and bordering the Burren Area, the Cliffs of Moher are one of Ireland's most spectacular sights. Standing 230 meters above the ground at their highest point and 8km long, the Cliffs boast one of the most amazing views in Ireland. On a clear day, the Aran Islands are visible in Galway Bay as well as the valleys and hills of Connemara. To the south of the cliffs is Hag's Head and was once the site of a castle. The cliffs reach their highest point just north of O' Brien's Tower. Cornelius O' Brien, a descendant of Brian Boru (he who defeated the Vikings in battle), built a Tower at the cliffs in order to enjoy some tea with his lady friends. The Tower is adjacent to the seastack, Breanan Mór, which stands over 70 meters above the foaming waves and is home to some of the Burren's wildlife.

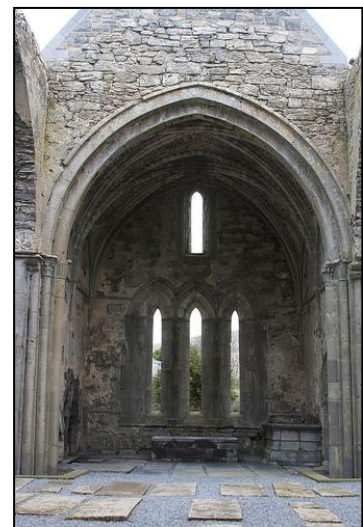


We continue to Galway via the Burren Region. The Burren, part of which forms the 100 square km Burren National Park, is a unique place. It is a Karst limestone region of approximately 300 sq. km, which lies in the north west corner of Co

Clare. It is composed of limestone pavements, which have been eroded to a distinctive pattern. This pavement is criss-crossed by cracks known as grykes in which grow a myriad of wild flora and under which are huge caves and rivers which suddenly flood when it rains. The Burren contains dozens of megalithic tombs and Celtic crosses as well as a ruined Cistercian Abbey dating back to the 12th century. You will discover small villages abandoned during the famine period and green roads on which you can walk for miles without ever seeing a car. The flora on the Burren is a mixture Arctic and Mediterranean and rare flowers such as gentian, orchids and bloody cranesbill are the rule rather than the exception. The Burren is truly an exceptional part of Ireland.



Next we visit Corcomroe Abbey. This well-preserved abbey is picturesquely sited among the grey hills of the Burren and is close to Bell Harbor. It is best known for its lonely situation, lying close to another interesting monastic settlement, a group of three small early Christian Churches which nestle in the pass of Oughtmana and which are dedicated to St. Colman. These early monks give us an idea of how they sought out isolated areas in which to build their churches, and then set about the task of becoming self sufficient and maintained themselves free from contact with outside society. The abbey acquired the name of 'Sancta Maria de Petra Fertili'- 'St. Mary of the Fertile Rock' which reflects the fertile nature of the Burren lands, which insured that here a Cistercian community could, by cultivation, provide itself with the necessary means of support. We conclude the day by travelling to Galway for dinner and overnight at our hotel.



Reflect: How is God calling me to be free from distraction to focus on Christ and the Church?

Day 6 – June 14, 2012 – Connemara

Let all be received as Christ. (The Rule of St. Benedict)

Today after a full Irish breakfast enjoy the beauty and wonder of Connemara. Connemara is a land of lakes and rivers, bogs and mountains. A land of small villages where Gaelic is still the spoken language and where little has changed since the beginning of time. It is without a doubt the wildest and the most romantic part of Ireland. Connemara is a vast peninsula bordered by the arid and rocky coastline of Galway Bay in the south, a land characteristic for its stone walls and thatched cottages. On its northern shore the land is harsher and more secret, with spectacular views of the Ocean and the beautiful fjord of Killary Harbor, as well as the steep mountains overlooking numerous lakes and large bog areas. Connemara is a real paradise for Nature lovers and those in search of strong emotions.



Next we visit Kylemore Abbey. Kylemore Abbey is located in the Kylemore Pass in Connemara. A Mitchell Henry built the House in 1868, after having spent his honeymoon in the area. The architecture is best described as neo-gothic and the house still displays all the characteristics of that period. One of Kylemore Abbey's most famous features is its miniature cathedral, built in 1870 and known locally as the Gothic church. Today, the abbey is home to the Irish order of Benedictine nuns. They bought the house in 1920, having fled their convent in war-torn Belgium in 1914. Facilities at Kylemore include a visitor centre, an



exhibition housed in the main reception rooms of the house and a video which takes the visitor through the history of the house and its occupants.

Our pilgrimage continues to Knock where we'll have time to visit the Shrine. This little town is an important pilgrimage centre and has been famous for over a century as the site of visions, apparitions, and miraculous cures. The story of Knock began on the 21st August 1879 when Our Lady, St. Joseph and St. John the Evangelist appeared at the south gable of Knock Parish Church. Fifteen people, young and old witnessed the apparition. From this miraculous occurrence Knock has grown to the status of an internationally recognized Marian Shrine. The personal pilgrimage of Pope John Paul II in 1979, commemorating the centenary of the apparition, inspired an even greater devotion to the Shrine and endorsed the indelible seal of Vatican approval. Mother Teresa of Calcutta visited the Shrine in June of 1993. One and a half million pilgrims visit the Shrine annually. We return to Galway for dinner and overnight at our hotel.

Reflect on the apparitions at Knock: Who is waiting for YOU to "appear" with an invitation to come back to Christ and the Church? (Catholics Come Home)

Day 7 – June 15, 2012 – Eucharistic Congress

The Eucharist which every week gathers Christians together as God's family around the table of the Word and the Bread of Life, is also the most natural antidote to dispersion. It is a privileged place where communion is ceaselessly proclaimed and nurtured. (Novo Millennio Ineunte, 36, also 43-45)

Today after a full Irish breakfast we travel back to Dublin to join the events of the Eucharistic Congress. We will have the opportunity to participate in a wide variety of cultural programs, lectures, and workshops. Unique experiences of shared prayer will deepen our Eucharistic spirituality. Our entire pilgrimage has been building to this rich experience of shared faith and worship with the universal Church. Tonight we enjoy a dinner and overnight at our hotel in Dublin

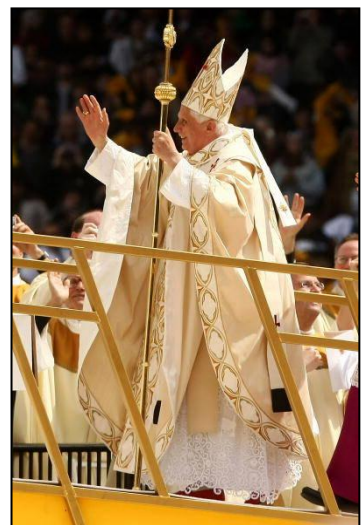
Reflect: Pray a prayer of gratitude for this day and the opportunity to respond to The Holy Father's call to conversion in Christ Jesus.

Day 8 – June 16, 2012 – Eucharistic Congress

The Eucharist is a central ministry of priests and it is by means of the Eucharist that "they are in communion with Christ the head, and leading others into this communion." (Ad Gentes, 39)

After a full Irish breakfast our pilgrimage continues with greater awareness of the central place of the Eucharist in our lives. The music, prayer, workshops, and lectures we share today will form us for a lifetime of service in our local communities. We take notice of (reverence) the gift of our parish pastors whose priestly service strengthens our walk with Christ. We pray for them with grateful hearts. We enjoy the life and culture of Dublin with dinner and overnight at our hotel.

Reflect: What gift is God calling me to share in ministry when return home? Am I being true to God's call (vocare) in my life?



Day 9 – June 17, 2012 – Eucharistic Congress

It is Jesus who invites us to participate in the Eucharist as a mark of His love. It is His Word that we listen to in the Gospel. It is His Body and Blood that we receive. It is in His name that we are sent out! (www.iec2012 Congress Themes)

After a full Irish breakfast we transfer to the Eucharistic Congress. The celebration of the Statio Orbis (closing ceremony) is the faith opportunity of a life time! Today our Eucharistic Congress reaches a climax. Through song, prayer, carefully prepared rituals, catechetical formation, and meeting Catholics from around the world, we have been nurtured and challenged. Today we gather around the Table of the Word and the Table of the Eucharist to meet Jesus Christ truly present within and among us! As we celebrate this concluding Liturgy, we bathe in the grace of this sacrament and hear the words, “Let us be bread blessed by the Lord, broken and shared, life for the world. Let us be wine, love freely poured. Let us be one in the Lord.” (Hymn: Let Us Be Bread, Dr. Thomas J. Porter, ©1990, GIA Publications)

We conclude our pilgrimage with dinner and overnight at our hotel. We savor the energy and hope of the Irish culture and countryside. This evening we capture the heartbeat of the world as we see the Body of Christ, the Church, bringing Good News to the world!

Day 10 – June 18, 2012 – Return to the USA

Because the bread is one, we though many are one body, all of us who partake of the one bread. In this way all of us are made members of His Body. (Lumen Gentium #7)

After a full Irish breakfast we transfer to Dublin Airport for our return to the Archdiocese of Denver.

Reflect: This Eucharistic Congress has called us to communion and now challenges us to mission! We return home nourished in mind, body, and spirit. Because of this powerful experience of Irish hospitality, we can say to others, “Faith is a JOURNEY, let’s go TOGETHER!”

©Faith Journeys, LLC
Dr. Timothy Mullner





The following cost estimate for your pilgrimage to Ireland is:

Tour Price – Denver, CO: \$3,095

Tour Price with self-arranged airfare (Land Only): \$2,085
(price based on minimum 25 passengers)

<u>Payment Schedule</u>		<u>Cancellation Penalty</u>	
Payment constitutes acceptance of all terms and conditions		Cancellations on or after the dates listed below	
\$200	September 30, 2011	September 30, 2011	\$100
\$700	October 14, 2011	October 31, 2011	\$200
\$700	December 16, 2011	December 2, 2011	\$300
\$700	February 1, 2012	March 10, 2012	\$700
Balance	March 10, 2012	April 24, 2012	Full Tour Cost

Tour Includes:

Round-trip airfare from Denver, CO, economy class
3 star hotel accommodations (based on double occupancy)
8 breakfasts, 0 lunches, 8 dinners
Professional Tour Manager throughout tour
Local English-speaking guides
All scheduled sightseeing and entrance fees
Modern motorcoach
Car ferry across the river Shannon
Eucharistic Congress registration fee (including Closing Ceremony Ticket)
(Based on Early Registration by December 1, 2011)

Tour Does Not Include:

Single supplement (private room): \$385
Personal services (including portage and drinks)
Travel Insurance (optional)**\$179
Airport taxes/fuel surcharges: estimated between \$350 - \$450 per person
(subject to change and adjusted with final billing)
Group Tips: \$90 (\$10 per person, per day)

This offer is based on staying that the following 3-star hotel accommodations, or similar:

City	Hotel
Dublin (1):	Mespil Hotel
Waterford (1):	Waterford Marina Hotel
Killarney (1):	Killarney Court Hotel
Galway (2):	Carlton Hotel
Dublin (3):	Mespil Hotel

***We highly recommend travel insurance to cover trip cancellation/interruption, travel delay, emergency medical, baggage delay and accidental death coverage. Please read the insurance information included in this document."&" If insurance is purchased at the time of a tour member's initial deposit for the trip, the travel insurance covers that tour member even if he/she must cancel or interrupt the trip due to a pre-existing condition*

TRAVEL PROTECTION PLAN

TRAVEL PROTECTION PLAN

Trip Cost	Premium Rate
Up To \$1,000	\$ 79.00
\$1,001 To \$1,500	\$ 99.00
\$1,501 To \$2,500	\$ 119.00
\$2,501 To \$3,500	\$ 149.00
\$3,501 To \$4,000	\$ 179.00
\$4,001 To \$4,500	\$ 199.00
\$4,501 To \$5,000	\$ 229.00
\$5,001 To \$6,000	\$ 249.00
\$6,001 To \$7,000	\$ 299.00

Sometimes it happens - an emergency at home or a sickness causes people to cancel their vacation or interrupt their trip. We hope this doesn't happen to you, but if it does, what about the financial costs involved? And what about losing your personal belongings or becoming ill while on your trip?

Because these unfortunate events can occur, a travel protection plan offered and administered by Trip Mate, Inc. is available with all Faith Journeys International travel arrangements. This high-quality travel insurance plan covers your vacation investment, your belongings, and most importantly, you. This travel protection plan covers you even if you must cancel or interrupt your trip due to a pre-existing medical condition - if you purchase the plan within 7 days of your initial deposit/payment for your trip.

Outlined below are the major benefits of the plan. A "Travel Insurance Certificate" which provides complete details of the plan, including conditions, exclusions and limitations will be included with your initial invoice and is also available to you, upon request, at any time prior to your purchase of the plan.

CANCELLATION/INTERRUPTION - TRIP COST

If you cancel your Trip for a covered reason, you will be reimbursed up to the amount in the Schedule, for the amount of unused non-refundable prepaid expenses for Travel Arrangements, forfeited, non-refundable Payments or Deposits that you paid for your Trip. If you have to cancel or interrupt your Trip due to a covered injury, sickness or death - your own or that of a Traveling Companion or Family Member - or for Other Covered Reasons, as defined, you will be reimbursed up to the Trip cost for unused land or water travel arrangements, plus additional transport charges paid to return home or to rejoin your Trip.

TRAVEL DELAY - \$500

Provides reimbursement up to \$100 per day (maximum \$500) for reasonable accommodation and traveling expenses until travel becomes possible if you are delayed for 12 hours or more due to a covered reason such as: any carrier delay; Injury, Sickness or death of you or your Traveling Companion; quarantine; loss of passport, travel documents or money; or natural disaster.

MISSED CONNECTION - \$500

If your arrival at your trip destination is delayed for 3 hours or more due to a certified delay of a Common Carrier, inclement weather, unannounced strike, natural disaster or terrorism, you will be reimbursed for the cost of your unused land or water arrangements, plus the additional transportation expense incurred to join your trip.

ACCIDENTAL DEATH & DISMEMBERMENT - \$25,000

These benefits are paid if loss occurs within 180 days of a covered Injury that occurs while on your Faith Journeys Trip.

MEDICAL EXPENSE/EMERGENCY ASSISTANCE - \$25,000

Provides reimbursement for reasonable and customary medical expenses incurred within 52 weeks of a covered Injury or Sickness that occurs while on your Faith Journeys Trip, or for emergency dental treatment received during your Trip not to exceed \$750; the cost of emergency transport to Home or an appropriate Hospital, including escort expense (both, if deemed necessary by the attending Physician), for a covered Injury or Sickness that occurs while on your Trip, or the cost of homeward carriage if deceased.

BAGGAGE AND PERSONAL EFFECTS - \$1,000

Coverage for direct physical loss or damage to your Baggage, passports or visas while on your Trip. A \$600 maximum limit applies to jewelry, watches, cameras and camera equipment, and furs — a \$300 per article limit applies to all other items. If, while on your Trip, your Baggage is delayed for 24 hours or more, we will pay up to \$100 for the purchase of necessary additional clothing and personal articles.

Conditions & Limitations

Certain exclusions and limitations apply and are detailed in the "Travel Insurance Certificate". For example, coverage does not apply to: any sickness or condition of you, a Traveling Companion or Family Member traveling with you that existed during the 60 days prior to the effective date of the coverages (this exclusion is waived if your premium is received within 7 days of your initial deposit/payment for your Trip), suicide, normal pregnancy, war or any act of war. Other Covered Reasons, as defined, includes the following events or their consequences: Cancellation or Interruption of your Trip due to: Inclement Weather, unannounced Strike, mechanical breakdown that causes complete cessation of services of Your Common Carrier for at least 12 consecutive hours; a documented traffic accident while enroute to departure; being hijacked or quarantined; jury duty; destruction of your home or destination by fire, flood, burglary or natural disaster; being called to the emergency service of government to provide aid or relief in the event of a natural disaster; a documented theft of passports or visas; a transfer of employment of 250 miles or more; involuntary job termination (must be employed with same employer for 1 year); a Terrorist Incident which occurs in a city listed on your itinerary for the trip and occurs within 30 days prior to Your Scheduled Departure Date or revocation of military leave due to war.

The Travel Protection Plan is underwritten by: United States Fire Insurance Company, Eatontown, NJ. Benefits are administered by: Trip Mate, Inc.*, 9225 Ward Parkway, Suite 200, Kansas City, Missouri, 64114, 800-888-7292 (*In CA, dba Trip Mate Insurance Agency).



Terms & Conditions

PAYMENT TERMS

- 1.1. **Payment.** Client shall strictly comply with the Payment Schedule on or before the due date. Faith Journeys ("FJ") accepts payment by check or, with a 3% surcharge, Visa and Mastercard. Checks should be made payable to Faith Journeys LLC.
- 1.2. **Additional Deposits.** From time to time, FJ may request one or more deposits over and above those set forth in the Payment Schedule (the "Additional Deposits"). Additional Deposits may be required because of travel during peak periods, the unique nature of the facilities, or any other matter which, in FJ's sole opinion, requires an additional deposit. FJ will consult with Client's tour organizer before making a request for an Additional Deposit, but FJ's decision whether and Additional Deposit is necessary is final. Client shall pay an Additional Deposit within thirty (30) days of the request by FJ.

2. DUTIES AND OBLIGATIONS OF FJ

- 2.1. **Scope and Exclusivity.** FJ shall have the duties and obligations set forth in this Section 2 and no others.
- 2.2. **Services Supplied by FJ.** FJ will provide the transportation, transfers, airfare, lodging and services specified in the attached tour brochure on the terms provided herein. FJ reserves the right to vary itineraries and/or destinations and to substitute hotels if circumstances beyond its control necessitate such change(s).
- 2.3. **Services Excluded by FJ.** All transportation, charges, services or other items not specifically identified in the tour brochure for this trip are not covered and must be paid by Client separately. Excluded services and items include, but are not limited to, tips to local guides; meals and beverages other than those noted in the tour brochure; expenses of a personal nature such as laundry, telephone, valet, etc.; portage for hand-carried luggage; passport and visa fees; free time activities; optional excursions and coach driver and guide/escort gratuities.
- 2.4. **Special Equipment and Excess Luggage Needs.** Special technical equipment (including musical instruments), excess or oversize luggage and the transportation for such is not included. Any piece of luggage/equipment over 50 pounds or exceeding 62 inches (length+ width + height) is subject to additional charges.

3. LIMITATIONS ON LIABILITY AND INDEMNIFICATION

- 3.1. **Limitation on Liability of FJ.** FJ, its agents and cooperating organizations expressly disclaim all responsibility and/or liability of any nature for loss, damage or injury to property or person due to any cause whatsoever occurring during a tour under its management, except damaged caused by the gross negligence of FJ.
- 3.2. **Client's Indemnification.** Client shall hold FJ, its agents, employees, contractors and affiliated organizations harmless from, and indemnify and defend same against, any and all claims or liability for any injury (including death) or damage to any person or property whatsoever occurring during the tour, or any part thereof, when such injury or damage has been caused in part or in whole by the act, neglect, fault, or omission of Client, its agents, servants, employees, or invitees. The provisions of this Paragraph 3.2 shall survive the expiration or termination of this Agreement with respect to any claims or liability occurring prior to such expiration or termination.

4. CANCELLATION

- 4.1. **Right to Cancel.** Client shall be entitled to cancel this Agreement only upon the terms set forth in this Section 4.
- 4.2. **Cancellation Schedule.** Subject to the terms of the remainder of this Section 4, and provided that Client has made all payments required under the Payment Schedule, Client may cancel this Agreement by providing written notice of the cancellation to FJ. Upon providing such notice, Client is entitled to return of deposits, if any, in accordance with the Cancellation Schedule set forth in the attached tour brochure. The balance of any deposits made by Client, including any Additional Deposits, shall be retained by FJ.
- 4.3. **Limitations on Cancellation.** Notwithstanding the provisions of the preceding Section 4.2, upon providing notice of cancellation to FJ, Client shall not be entitled to refund of any deposits which have been used by FJ to reserve space or fares if the deposits for space or fares are non-refundable to FJ from the providers. Further, in the event that the payments or deposits made by Client are less than the amounts paid by FJ to reserve space or fares which are non-refundable, Client shall not receive any funds pursuant to the Cancellation Schedule and shall remain liable to FJ for any shortfall. Client shall remain liable to FJ for any actual damages to FJ resulting from Client's cancellation of the Agreement.

5. RULES AND REGULATIONS

Client agrees to abide by all Rules and Regulations of FJ, a copy of which has been furnished to Client. Failure of Client to comply with the Rules and Regulations shall constitute a breach of this Agreement.

6. CLIENT'S BREACH AND DEFAULT

- 6.1. **Breach.** Upon the breach of any term of this Agreement, including but limited to failure to strictly comply with the payment terms, failure to timely make Additional Deposits, or violation of any of the rules and regulations of FJ, FJ may, at its option, declare the Client in default and terminate its obligation to perform further under this Agreement. Upon any breach of this Agreement, by failure to make payments or otherwise, FJ may, in its sole and absolute discretion, allow the Client to remedy the breach by making the required payments or deposits, or by otherwise performing as required. However, all late payments, if accepted by FJ, will be charged a late fee of one and one-half percent (1 1/2 %) of the unpaid balance per month.
- 6.2. **FJ's Remedies.** Upon any breach this Agreement, by failure to make a payment, or otherwise, Client forfeits its entire deposit and FJ may attempt to reschedule, resell or reuse any goods or services previously purchase or reserved for Client's benefit including, but not limited to, air or other transportation and hotel accommodations.

7. JURISDICTION AND GOVERNING LAW

Any dispute of any kind arising out of or from a claimed breach of this Agreement shall be resolved in the Superior Court of Maricopa County, Arizona, and Client consents to venue and jurisdiction in that Court. Client further agrees that all disputes arising from this Agreement shall be resolved in accordance with Arizona law.

8. ATTORNEY'S FEES

In the event of any legal action or proceeding arising out of this Agreement, the prevailing party shall be entitled to recover its reasonable attorneys' fees and related costs incurred in such action and such amount shall be included in any judgment rendered in such proceeding.

9. WAIVER

No waiver by FJ of any provision of this Agreement or of any breach by Client hereunder shall be deemed to be a waiver of any other provision hereof, or of any subsequent breach by Client of the same or any other provision. FJ's consent to or approval of any act by Client requiring FJ's consent or approval shall not be deemed to render unnecessary the obtaining of FJ's consent to or approval of any subsequent act of Client.

10. NOTICES

All notices, demands or other communications in this Agreement provided to be given, made or sent by either party to the other shall be deemed to have been duly given, made or sent when made in writing and deposited in the United States mail, certified or registered, postage prepaid, and addressed to the respective party at the appropriate address set forth in the Initial Terms.

11. INTEGRATION AND AMENDMENTS

The provision of this Agreement, including these Terms and Conditions and any Rules and Regulations of FJ, supersede any oral or written agreement between the parties, and any such oral or written agreement is hereby integrated into this Agreement. To the extent it conflicts with this Agreement, any information found in any advertising material, brochure, or web site is hereby superseded by this Agreement. Any amendment to or revision of this Agreement must be in writing and signed by both parties.

12. ACTS OF GOD

Client shall have the option of (1) taking a refund pursuant to the provisions for cancellation above, or (2) selecting an alternate program through FJ if the tour is canceled by reason of any Act of God, such as war, labor dispute, martial law, state of emergency, earthquake, or the like..

13. TRAVEL CONDITIONS

13.1. **Hotels.** Hotels utilized are doubles/twins. Each room will have private facilities, including shower or bath. A supplement surcharge is applicable to participants in single accommodations.

13.2. **Fluctuations, Substitutions with Group.** Client may, under certain circumstances, substitute another person in their stead. Substitutions on flights are allowed subject to the terms of the airline contract. The addition of a new person is charged at the best price available. FJ will use its best efforts to keep the new person at the group rate.

The following fees apply for substitutions:

On or after 180 days before departure the substitution fee is \$50

On or after 120 days before departure the substitution fee is \$100

On or after 90 days before departure the substitution fee is \$150

On or after 60 days before departure the substitution fee is \$350

On or after 45 days before departure the substitution fee is \$1000

Substitutions are not possible less than 5 days before departure

*FJ must receive the substitution deposit/payments before making a refund to the Client.

13.3. **Rooming List and Late Changes.** FJ must receive the rooming lists no later than 45 days prior to departure from Client's tour organizer. Late changes in the rooming list, including name changes, additions and deletions are subject to a late change/penalty of \$25.00 per person. This charge covers the costs of administrative expenses, long distance telephone calls, over-night mail charges, etc.

13.4. **Flight Arrangements:** All flights will be by scheduled I.A.T.A. carriers with the routing and scheduling at the discretion of FJ. Tour price is based on mid-week travel and air fare flying round trip from the location stated in the tour brochure. Any increase in air fare shall be borne by the participant. Airline taxes and fuel surcharges are not included in price. The operators providing transportation are not responsible for any act, omission or event during the time that passengers are not on board their aircraft or conveyances. FJ has no responsibility or liability of any nature whatsoever for loss, damage, or injury to property or person resulting from the provision of air or motorcoach transportation. The price of a vacant seat and the cost of segments of the program lost due to missing scheduled departure or absences during the tour cannot be refunded. If Client misses any included transportation segment (e.g. flight, transfer, bus or train departure), Client is responsible to make arrangements for and to pay the cost of rejoining the group.

13.5. **Deviations:** Late return deviations are sometimes permitted from the original city of departure, for a minimum fee of \$175, if the class of service is still available at time of booking and if the carrier's fare rules permit the change. All deviations must be applied for by writing, faxing or emailing your request to Faith Journeys. When a deviation is confirmed by the airline, passengers will be notified and invoiced for all charges incurred for their deviation. Each subsequent change is subject to an additional \$50 processing fee, plus airline fees once confirmed. Deviations are difficult, especially during high season, so requests must be made as early as possible. Clients who deviate must arrange for their own ground transportation to and from the airport.

14. FREQUENT FLYER PROGRAM MEMBERS

If Client desires to use frequent flyer miles for free tickets, Client will need to book its flights directly with the airline and purchase a "Land Only" package from Faith Journeys. Faith Journeys is unable to provide ticket copies after departure for mileage credits. Client should check with their preferred carrier to determine if Client qualifies for any mileage accrual.

15. LAND ONLY

Any Client choosing the 'Land Only' package after their initial full-tour reservation has been made in writing, faxing or emailing, is subject to a \$50 change fee up to 60 days prior to departure. Anyone changing to a 'Land Only' option 60 to 0 days prior to departure will be subject to a \$1,000 change fee. If Client chooses the 'Land Only' option must arrange for their own ground transportation to and from the airports and any mid-tour flights.

16. TOUR PRICES

The services specified are based on a minimum of number of passengers. If this quota is not reached, the price of the tour will be increased proportionately. All tour prices quoted for transportation and land arrangements are based on rates (including foreign exchange rates) and taxes in effect at time of publication and are subject to change. Adjustments will be made when the exchange rate varies more than 5% at 120 days prior to departure. Confirmation of final air and land prices and taxes will be advised at that time.

17. TRAVEL INSURANCE

Travel insurance is highly recommended. Faith Journeys offers TRIP MATE travel insurance. Coverage includes Accidental Death & Dismemberment, Medical Expense/Emergency Assistance, Pre-Departure Trip Cancellation due to illness, Post-Departure Trip Interruption, Travel and Baggage Delay and loss of Baggage and Personal Effects. The non-refundable premium must be paid at the time of the initial deposit to include any pre-existing medical conditions that do not disable you from travel at the time the premium payment is made. A detailed copy of the Faith Journeys Travel Protection Plan Summary is provided with the tour brochure. All cancellations are subject to the terms and conditions stated therein unless the U.S. State Department bans travel to the countries included in the itinerary. Claims for refunds will be handled expeditiously and will be made within 60 days following the termination of the tour program.



FAITH JOURNEYS
 1440 SO. PRIEST DR.. SUITE 102
 TEMPE, AZ 85281
 Phone (480) 894-8407 Fax (480) 894-5137
 Email: info@myfaithjourneys.com

**Archdiocese of Denver
 Reservation Application**

I have read and do accept the conditions as outlined in the Archdiocese of Denver pilgrimage to Ireland. I enclosed a check for my deposit of \$200 per person due September 30, 2011.

Please photocopy or fill out this page and complete and send with your deposit

Please include a copy of each passport. Passports MUST be valid 6 months after your tour returns.

Make all checks payable to *Faith Journeys*. Return COMPLETED form and deposit to:

Deposit with reservation application constitutes acceptance of all terms & conditions in this brochure. PLEASE READ CAREFULLY ALL TERMS AND CONDITIONS

Faith Journeys
 1440 So. Priest Dr., suite 102
 Tempe, AZ 85281

NAME (as printed on passport): _____

Name as you would like on your Nametag: _____

ADDRESS: _____

CITY / STATE / ZIP _____

Daytime Phone () - Home Phone () - E-mail _____

EMERGENCY phone contact while you are abroad _____ Phone () - _____

Nationality _____ (USA, Spain, etc.) Profession _____ (student, etc)

I wish to room with _____ I want a private room (add single supplement)

I want to arrange my own air (Land Only)

TRAVEL INSURANCE

We highly recommend travel insurance to cover trip cancellation/interruption, travel delay, emergency medical, baggage delay and accidental death coverage. Your tour host has been supplied travel insurance information, rates and coverage for this tour. Please read the information and decide on your policy now. **If you purchase the insurance at the time of your initial deposit for your trip, the travel insurance covers you even if you must cancel or interrupt your trip do to a pre-existing medical condition.**
 PLEASE REFER TO THE INSURANCE FLYER SUPPLIED TO YOUR TOUR HOST FOR LIMITATIONS AND FOR ANSWERS TO SPECIFIC QUESTIONS

Yes, I would like to purchase the travel insurance package at this time. Enclosed is a check for \$179 per person (may be added to the deposit check to Faith Journeys).

No, I do not want to purchase travel insurance, but do understand the risks involved with travel and will assume full responsibility.

DEVIATIONS – DEADLINE DATE: 10 March 2012

Some airlines allow you to return later than your group from the designated Departure City for an additional fee (minimum deviation charge of \$175 plus any difference in airfare) and individual visa charge. It is imperative to notify Faith Journeys **in writing** of your deviation dates as soon as possible, and **not less than 90 days before departure**. Faith Journeys will notify you of confirmation 45 days before departure, as confirmation is subject to airline availability (any passenger wanting to deviate after deadline date must purchase our land only tour; if you do wish to purchase our land only tour, please indicate that in the additional information space provided below. Only 10% of deviations allowed from group).

Deviation Return Date from Dublin: 1st choice: _____ 2nd choice: _____ 3rd choice: _____

Additional Information: _____

SPECIAL REQUESTS – Not guaranteed but will be requested with airlines

1. Dietary Restrictions for airline (and restaurants, when possible) _____
2. Special Circumstance airline seating for medical reasons _____

I wish to pay the payment due/insurance with Visa/MasterCard # _____ Expires _____
 (3% additional non-refundable processing fee will be added for those using credit cards. **If paying by credit card, please include a copy of the front and back of the card you are using**)

Signature _____ Date _____

(All applicants must sign reservation application; if applicant is under 18, Parent/Guardian must sign)



Presents:

**Parish Preparation for the 50th International Eucharistic Congress:
The Eucharist: Communion with Christ and One Another!**



Pope Benedict XVI has invited the entire world to gather in Dublin:
“The 50th Eucharistic Congress theme recalls the centrality of the Eucharistic Mystery for the growth of the life of faith and every authentic process of church renewal.”

Our pilgrimage as the Archdiocese of Denver calls us to stand in the light of the Second Vatican Council and its 50th anniversary, 1962-1965:
“In this assembly, under the guidance of the Holy Spirit, we wish to inquire how we ought to renew ourselves so that we may be found increasingly faithful to the Gospel of Jesus Christ.”
(Opening Message to Humanity #3)

Consider These Steps for Pilgrimage Preparation:

1. Gather with your parish pastor and pilgrimage delegation. Review the Parish Pastoral Plan:
*Reflect: What are our biggest community needs and how will we meet them in the future? What are our parish priorities for leadership, programs, and services?
Share your goals for this pilgrimage...
2. Visit the Eucharistic Congress website: www.iec2012.ie Click on *Four Stages of Preparation*, plus *Spiritual and Catechetical Resources*
*Reflect: How will we use these materials to prepare as a pilgrimage group? Sessions between Sunday mass, monthly prayer services, potlucks, etc.?
3. Support a parish ministry or outreach service agency. By connecting our Eucharistic Congress preparation to acts of charity and social justice, we will model the great gift of being a Roman Catholic follower of Jesus Christ: *“We are in communion for mission!”* (Blessed Pope John Paul II)
4. Pray the IEC Prayer everyday: www.ie2012.ie Click on *Prayer*
5. Research the rich history, faith life, and culture of Ireland. Find our pilgrimage sites on a map and pray for openness to the lessons to be learned on this pilgrimage.

We look forward to sharing the IEC with you!

Dr. Timothy Mullner, D.Min.
Catholic Program Manager
Renton, WA

Joshua Alston
Operations Specialist
Tempe, AZ

Pilgrimage Questions? Call Joshua Alston Toll Free: 1-877-732-4845, Ext. 100

Faith is a Journey, Let's go Together!

1440 S. Priest Drive, Suite 102 • Tempe, AZ 85281-6954
877-7-FAITH-J • 480-894-8407 • Fax: 480-894-5137
Website: www.myfaithjourneys.com • E-mail: info@myfaithjourneys.com